

# Kyoto TERRSA Access Guide

Address Kyoto TERRSA Shinmachi Kujo Minami-ku, Kyoto, Japan (Kyoto Citizen's Amenity Plaza)

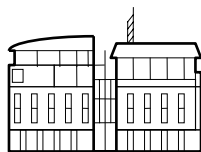
Telephone number 81+75-692-3400 Fax number 81+75-692-3402

## Access & Location

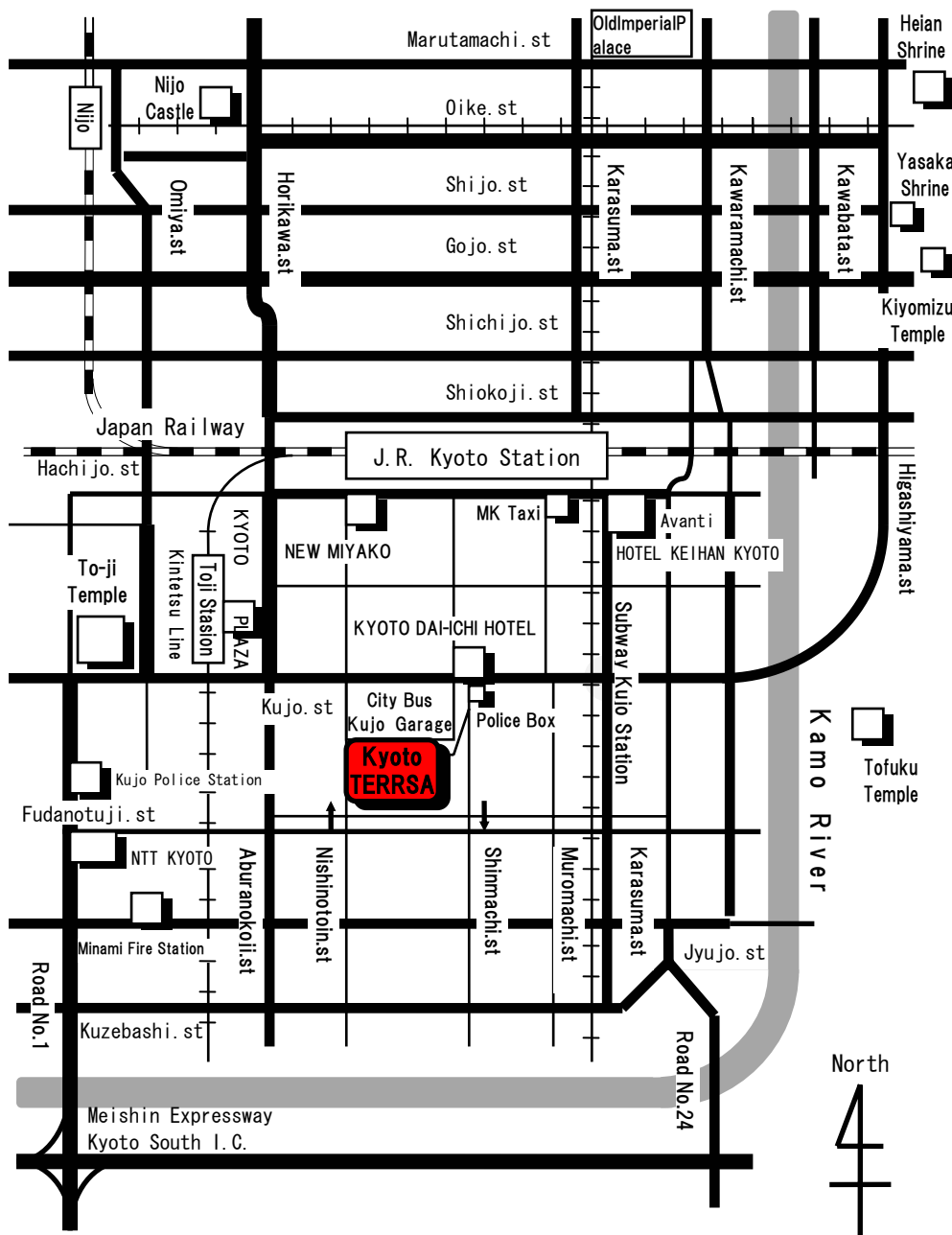
- 75 minutes by train from Kansai International Airport to Kyoto Station
- 2 hours and 30 minutes by Shinkansen (bullet train) from JR Tokyo Station to Kyoto

## Transportation

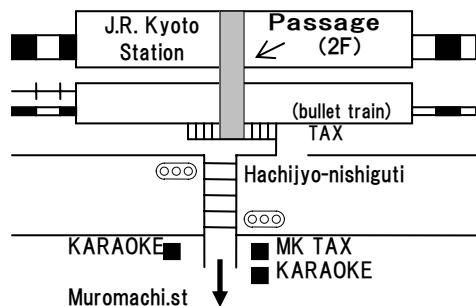
- 5 minutes by subway (Karasuma Line) from Kyoto Station to Kujo Station.
- 5 minutes walk from Kujo Subway Station.
- 5 minutes walk from To-ji Station on the Kintetsu Line
- 15 minutes walk from Kyoto Station



Kyoto TERRSA



## J.R. Kyoto Station Sketch



## Sightseeing close by

- Toji Temple (10 minutes walk)
- Tofukuji Temple (10 minutes by Bus)
- Kiyomizu-dera Temple (20 minutes by Bus)
- Yasaka Shrine (25 minutes by Bus)
- Nijo Castle (30 minutes by Subway)
- Heian Shrine (30 minutes by Bus)